

ELITE EDUCATION

Vol 17 - Special Edition - 2025

REDEFINING EDUCATION



BRAEBURN GARDEN ESTATE SCHOOL

Where Learning Meets Global Citizenship

MOST VALUABLE SCHOOLS TO WATCH IN KENYA 2025

An Investment In Education Is An Investment For Our Future



**ADMISSION
NOW**

OPEN

Others teach and you study...
here, we educate and you learn!!



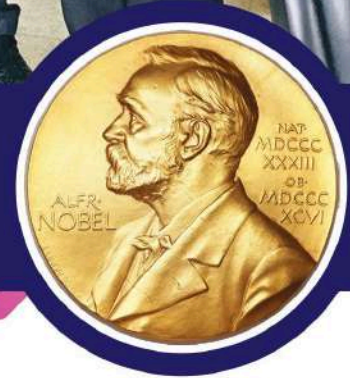
المدرسة العالمية
WORLD SCHOOL
shaping future...

Contact us at: 968 93987674, 968 99331327



Empowering Children To Learn Beyond The Classroom

OUR VISION
A NOBEL LAUREATE ALUMNUS
BY YEAR 2050



OUR MISSION

We are dedicated to fulfilling every child's educational and developmental needs in a safe and caring environment conducive to learning and teaching. We aim to create responsible, global citizens who show understanding, compassion and acceptance of the differences in the world. We strive to ensure that every child in our care is empowered to make choices and encouraged to contribute to our community.



المدرسة العالمية
WORLD SCHOOL

shaping future...



PB No. 2204, PC-211, Salalah, Sultanate of Oman
Tel: +968 23225492, Fax: +968 23288205
email: info@worldschooloman.com, www.worldschooloman.com



Editor's Note

Dear Readers,

It gives us great pleasure to present the special issue of Elite Education Magazine—**Most Valuable Schools to Watch in Kenya 2025**.

Kenya's education landscape is evolving at an impressive pace, blending academic excellence with innovation, inclusivity, and a strong sense of community. Schools across the nation are stepping forward as beacons of progress, fostering not only intellectual growth but also character, creativity, and resilience among students. These institutions are actively shaping the next generation of thinkers, leaders, and changemakers who will influence both local and global communities.

In this issue, we highlight schools that have distinguished themselves through their vision, commitment, and impact. From integrating technology in classrooms to advancing holistic development through arts, sports, and leadership opportunities, each featured school exemplifies the values of excellence, adaptability, and student empowerment.

On the cover we have **Braeburn Garden Estate School** and **Millennium Global International School**.

We also have an editorial on "**The Number One Priority in School Leadership: Employee Care**".

Aakriti Singh
EDITOR IN CHIEF

Elite Education

Top Education Magazine

www.eliteeducationmagazine.com

ELITE EDUCATION

Vol 17 - Special Edition - 2025

REDEFINING EDUCATION



CONTACT US

Email: info@eliteeducationmagazine.com

WEBSITE

<https://www.eliteeducationmagazine.com>

FIND US ON



EDITOR IN CHIEF

AAKRITI SINGH

MANAGING EDITOR

PARTH GOYAL

SALES

PROJECT MANAGER

GEORGE SMITH

BUSINESS DEVELOPMENT EXECUTIVE

ELINA, EVA

MARKETING

DIGITAL MARKETING MANAGER

ADITYA PATRE

RESEARCH ANALYST

ERICA PRICE

DESIGNING

MANAGER

AMAN DIXIT

EXECUTIVES

KIRAN, SAM

Table of Contents

Cover Story

BRAEBURN — 10
GARDEN ESTATE SCHOOL

Where Learning Meets Global Citizenship

Profile

Millennium — 20
Global International School

Fostering Excellence, Diversity, and World Competence

Editorial

The Number One — 26
Priority in School
Leadership: Employee Care

**COVER
STORY**



SKIS School Profile



Bilingual Education in English and German



Elite Boarding (Spacious, Newly Renovated En-Suite Rooms of 22-40 m²)



A Wide range of Extracurricular, Co-Curricular and Athletic Activities



Individual Approach (<16 students per study group)



International Diploma (IB, A-Levels)



Internationally Qualified Teachers & Staff



Campus in a 13th Century Castle

AUSTRIA'S ONLY SCHOOL WITH ALL OF THE FOLLOWING ACCOLADES:

- ✓ IB World School offering IB Diploma Programme
- ✓ Cambridge International Education School offering A-Level Diploma
- ✓ Duke of Edinburgh Award Centre
- ✓ Applied to join the Council of International Schools



OUR STUDENTS AND STAFF COME FROM:



MISSION

To educate, develop, and inspire our students to reach their full potential by providing a first-class education in a multicultural environment.

VISION

Schloss Krumbach International School provides a holistic education in a place where all students feel confident and cared for. Having received a first-class education in an open-minded international and multicultural environment, our students become thoughtful, active, and caring members of local, national, and global communities.

PHILOSOPHY

Discover yourself by working together!

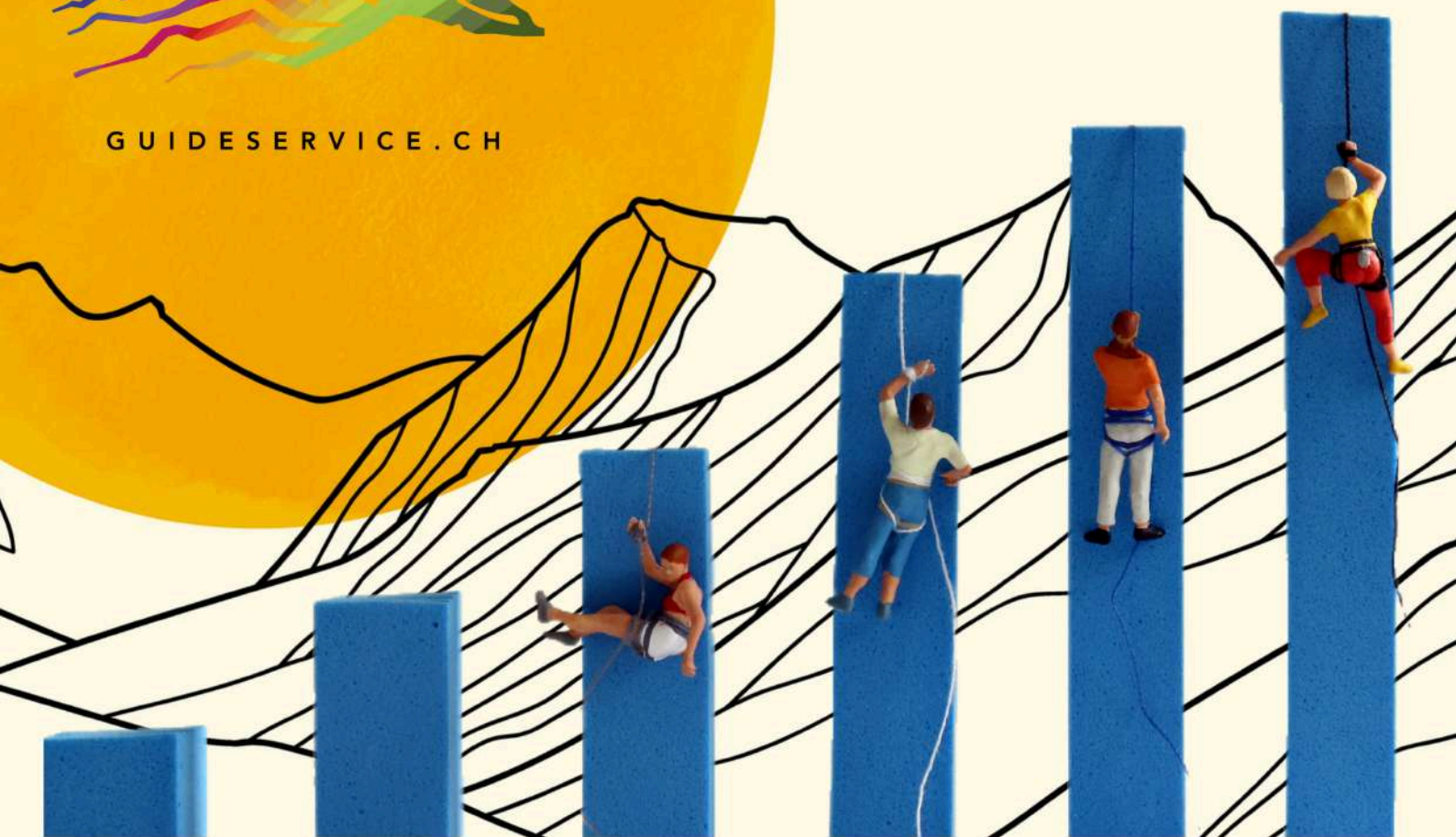
This motto is deeply embedded in our school life, from academic honesty policies to our relentless focus on teaching and learning where we track and analyze student progress and development in detail so that we are constantly striving for excellence and improvement.

At SKIS we provide young people with the freedom to develop as unique individuals, while instilling a sense of social and political responsibility.

**GUIDES ALPES
VAUDOISES**



GUIDESERVICE.CH



Ready for academic initiatives and summer activities

SWISS MOUNTAINEERING SCHOOL FOR PRIVATE SCHOOLS

Instruction and oversight conducted solely by certified experts

WWW.GUIDESERVICE.CH



INFO@GUIDESERVICE.CH

**COVER
STORY**





BRAEBURN GARDEN ESTATE SCHOOL

WHERE LEARNING
MEETS GLOBAL CITIZENSHIP

Tucked away in the vibrant educational landscape of Nairobi, Kenya, Braeburn Garden Estate School is not just a place of learning—it's a dynamic community where young minds are cultivated to become innovative thinkers, compassionate global citizens, and confident lifelong learners.

With over 80 nationalities represented, the school is a shining example of what it means to combine academic excellence with cultural richness and inclusivity.

Education at Braeburn Garden Estate is not a matter of filling minds with information, but of igniting fires of curiosity, creativity, and critical thinking.

From Early Years to the International Baccalaureate (IB) level, every aspect of its pedagogical design is carefully crafted to provide a rich and contemporary learning experience far beyond the confines of classroom walls.

Innovative Learning That Inspires

At the very heart of Braeburn's educational approach is a commitment to inquiry-led, experiential learning. From Early Years, children are engulfed in playful discovery that fosters self-awareness and autonomous thinking.

As they progress through the Primary years, children are involved in cross-curricular projects that stimulate their wonder and prompt them to make connections to the real world.

A focus on metacognition—thinking about thinking—sets Braeburn apart from more traditional models. Students learn how to learn rather than what to learn, and through this develop lifelong skills in problem-solving and self-directed inquiry.

The incorporation of technology—from tools like Google Classroom and CenturyTech to creative tools like Kahoot—augments this process by making learning more interactive and personalized. As an IB World School, Braeburn fully integrates the Approaches to Learning (ATLs) in its curriculum. These skills—everything from communication to self-management—are demonstrated in showcases such as the IB Exhibition.

A Celebration of Diversity

With its multicultural surroundings, Braeburn Garden Estate transcends mere toleration of diversity—it embraces it. The



school's inclusive spirit makes each learner feel valued, understood, and empowered. Cultural Day and Mother Tongue Language Day celebrations are some of the ways students celebrate their heritage and inculcate intercultural understanding.

Adaptable instructional strategies, including "scaffolding" and the goal-oriented "Teach to the Top" approach, provide support for and challenge all students—from English language learners to top achievers—according to their needs.

The presence of a broad range of mother tongue language courses at IGCSE and IB levels, and considerate touches such as the on-campus prayer room, are other indicators of the school's dedication to equity, justice, and belonging.

Association of International Schools in Africa (AISA) membership and a school-wide DEIJB (Diversity, Equity, Inclusion, Justice, and Belonging) policy cement these principles on an organizational level.



Outside the Classroom: Learning in the World

Braeburn Garden Estate holds that true education needs to reach out into the community and beyond. Partnerships with local companies and universities provide Year 10 and IBCP students with real-world experience through effective internships and work placements.

Among the school's most motivating community outreach initiatives is the long-standing collaboration with Lisha Maisha, a Kenyan village in the countryside.

There, Braeburn students collaborate with locals on sustainable water projects, using the classroom learning to address real-world problems in the community.

Field trips and curriculum-based excursions also support this philosophy. From visits to wind turbines to learn about renewable energy, to environmental studies through local biodiversity walks, students are always linking theory to practice. Outdoor learning and residential develop leadership,

teamwork, and resilience—yet more important than any academic success.

A Culture of Collaboration and Communication

Effective communication is the foundation of Braeburn's school-community collaboration. Weekly newsletters, parent WhatsApp groups, and an open-door policy with staff and management ensure parents are involved and well-informed. Termly parent-teacher meetings and forums provide organized forums for constructive discussion and input.

The active parent group, FROGS (Friends of Garden Estate School), is central to creating a unified school community. From cultural festivals to supporting school activities, FROGS enhances the feeling of belonging and shared vision among families.

Personalized Learning for All

Every student at Braeburn is considered an individual with



strengths and challenges. Regular and standardized testing informs teachers about each learner's baseline, while specific support plans are co-created with families to meet particular needs.

The Inclusion Team at Braeburn offers dedicated assistance for students with Special Educational Needs and Disabilities (SEND), English as an Additional Language (EAL), and those who are more able or talented.

From enrichment programs to coding competitions, Braeburn ensures that every learner is given both the support and the stretch they need to thrive.

Nurturing Well-being and Mental Health

Braeburn's dedication to all-round development is reflected in its holistic well-being programme. Well-being is integrated into the Personal, Social, Health and Economic (PSHE) curriculum and supported by a holistic team including two full-time counsellors, nurses, and mental health first aiders.

Student voice is also actively solicited through mechanisms such as the GL PASS survey, allowing the school to respond and change with the emotional and mental health needs of the students.

Enrichment days and inventive clubs—mindful art and sports, for example—encourage emotional stability, self-expression, and mental toughness.

A Hub of Creativity and Innovation

Creativity thrives in Braeburn Garden Estate. From the STEAM competition (focusing on the UN Sustainable Development Goals), the student drama shows, or the special Braeburn Dragon Award—its junior counterpart of the Duke of Edinburgh Award—students are constantly motivated to be independent thinkers and lead with vision.

The institution's adoption of the 4C's—creativity, critical thinking, collaboration, and communication—at the school level ensures these essential competencies are developed





across all subjects and age groups.

Preparing for the Future

While Braeburn looks to the future, it stays true to innovation, well-being, and global preparedness. Considerate integration of artificial intelligence and digital learning technologies is increasingly becoming a priority, making students ready for shifting demands in higher education as well as the global work environment.

But even as technology redefines learning, Braeburn stands firm in its commitment to the idea that authentic, powerful relationships and the sense of human connection are at the core of learning.

Through a dedication to rigorous academic values, diversity, and well-rounded development, Braeburn Garden Estate School is not merely a school—it's a launching pad for young individuals to learn about who they are, what matters most to

them, and how they can leave the world a better place. For parents looking for an education that harmoniously merges intellect with compassion, and success with significance, Braeburn provides an experience as deep as it is motivating.



Acorn International School

Bilingual education in the green heart of Rome

Founded in 1999, Acorn International School of Rome is a bilingual international school that welcomes students aged 3 to 18 in the beautiful natural setting of Vejo Park, in North Rome. Its dual curriculum – Italian and UK Curriculum – is integrated into a rich educational experience, with native-speaking teachers, small class sizes, and personalized attention.



The school is recognized by the Italian Ministry of Education, accredited by the IB® Organization and Cambridge, and is a partner of Oxford University Press. It is also the first school worldwide to launch the NASA Moonshot Program, and actively takes part in the Roma Hub for Education.

 La Giustiniana 1200, 00189 Rome

 acorninternationalschool.eu

Smiling International School

Culture, languages, and innovation in Ferrara

With over 25 years of experience, Smiling International School is a bilingual, multicultural school located in Ferrara, welcoming students aged 2 to 18 into a complete and dynamic international education pathway. With over 25 years of experience, Smiling International School is a bilingual, multicultural school located in Ferrara, welcoming students aged 3 to 18 into a complete international education pathway.



The school combines the Italian national curriculum with the International Baccalaureate® (IB), promoting active learning, critical thinking, creativity, and global citizenship. It offers a warm, inclusive, and innovative environment where every student is guided to grow and build their own future with confidence.

 Corso Porta Mare, 117, 44121 Ferrara

 smilinginternationalschool.eu/

Setting High Expectations for Student Success

NIAGARA CHRISTIAN COLLEGIATE

- Local and International Students
- Family-like Environment
- More Than 50 Years Specializing in ESL
- Individualized Support
- Expert Guidance Services
- Safe, Beautiful Campus
- Top University Placements
- Beautiful Boarding Facilities

AUGUST CREDIT PROGRAM

- Earn a Full Academic Credit
- An Early Start to the School Year
- Make New Friends From Around the World

100% of NCC graduates who applied to post-secondary institutions were given offers



Students from over 15 different countries on campus



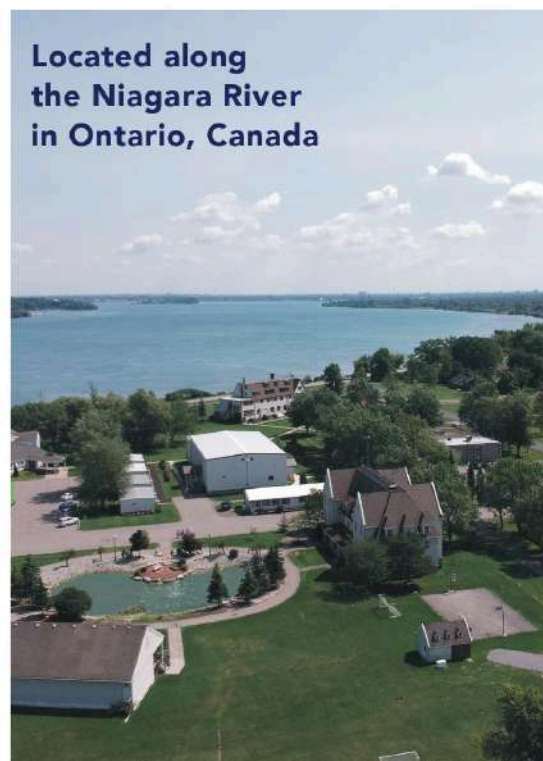
Located along the Niagara River in Ontario, Canada



Now Offering: Virtual Enrollment Appointments

Our enrollment specialists would be happy to meet you over a Zoom call!

Reserve an Appointment at niagaracc.com/schedule-zoom-meeting



✉ enroll@niagaracc.com

☎ 905.871.6980

🌐 www.niagaracc.com

Niagara Christian Collegiate
2619 Niagara Parkway
Fort Erie, Ontario
Canada, L2A 5M4



Millennium Global International School

Fostering Excellence, Diversity, and World Competence

Located at the heart of Kenya, Millennium Global International School has earned a name as Africa's most modern British curriculum school, merging academic prowess with innovation, cultural diversity, and in-depth student development. Following Pearson Edexcel guidelines from Early Years to A Levels, the school has emerged as a leader in comprehensive education, always in the top rankings in Kenya, Africa, and even globally in several subjects.

Innovative Learning for a Changing World

Millennium Global combines inquiry and project-based learning with differentiated instruction, engaging every student to be challenged and supported. At the primary level, the

iPrimary programme includes ICT, PSHCE, social studies, art, and foreign languages to encourage curiosity and well-rounded thought.

Enrichment programs make learning come alive with STEAM activities like robotics, coding, and 3D printing. Students participate in clubs from chess and drama to archery, ballet, and environmental education, building creativity, collaboration, and problem-solving capabilities both in and out of the classroom.

A Culture of Inclusion and Global Citizenship

With more than ten different nationalities of students and a 5:2

local-to-international ratio, diversity is ingrained in the DNA of Millennium. The school promotes empathy and cultural sensitivity through community service, refugee support programs with UNHCR, and partnerships with NGOs such as Ngong Children's Association.

One such highlight is its online exchange program with Japanese schools. Students spend a term learning about Japanese history, culture, language, and food before being matched up online with counterparts overseas with whom they form lasting cross-border friendships.

Cultural festivals, International Days, and language lessons in Swahili and Spanish on campus add to a genuinely global outlook.

Strategic Partnerships and Real-World Exposure

Millennium Global practices extending learning beyond books. Students travel to institutions like Aga Khan University for firsthand exposure to scientific research and higher education opportunities. University and career fairs put students face-to-face with admissions personnel from institutions globally.

The school also collaborates with the hospitality sector for experiential learning, such as partnerships with Best Western Plus hotel for cooking club, and undertakes social awareness

initiatives such as workshops on menstrual health with Mosaic Health and Pathways Kenya.

Entrepreneurship is a major emphasis—through business pitch competitions that are judged by CEOs and venture capitalists, students gain expert critique, mentorship, and even seed money for their ideas.

Personalized Learning and Student Support

With an average class size of only 12 students, all students receive individualized instruction. English as an Additional Language (EAL) support guarantees that non-native speakers succeed, while gifted students are challenged to compete nationally and internationally in writing, art, and science.

Individual Education Plans (IEPs), created with the school psychologist, offer focused support for students requiring academic or behavioral help.

A robust pastoral care framework guarantees that social and emotional well-being is a priority. Counsellors are integrated with families, and wellness classes in life skills and health literacy are integrated into the curriculum.

Sports, ranging from swimming to roller hockey, complement physical health and self-esteem.







Promoting Excellence Through Competition and Creativity

Millennium Global students excel in national and international competitions on a regular basis. They received Pearson Outstanding Learner Awards for outstanding grades in English, mathematics, and science throughout Africa in 2023. Others have gold medals in archery, swimming, and national skating competitions.

Innovation Week, Science Fairs, Internet of Things competitions, and Model UN mock debates encourage students to be critical thinkers, effective communicators, and problem solvers who collaborate.

Technology-Driven Learning

Technology is integrated smoothly into learning. Intelligent screens, ICT labs, and online learning platforms reinforce class interaction. Students learn digital literacy through robotics, digital media, and 3D design projects, and educators receive continuous Pearson-led training to remain up to speed on educational technology.

Balancing Rigor with Support

Millennium Global alignment with Pearson Edexcel standards ensures academic strength and maintains an encouraging atmosphere. The school has a 100% pass rate in IGCSE and A Level and has consistently been ranked number one in Kenya, Africa, and globally.

Evidence-based teaching skills are the focus of faculty development programs, and students are guided regularly through feedback to aim high without unnecessary pressure.

Vision for the Future

As awarded the "Most Outstanding in Student Growth & Development" in 2023, Millennium Global continues to strive to develop not only high performers, but kind, ethical leaders. Committed to upholding the values of His Highness Prince Karim Aga Khan, the school teaches values of fairness, respect, and integrity, developing "lighthouses" who will light up the world with justice and compassion.

In the future, Millennium is increasing partnerships with environmental and humanitarian groups, making investments in AI-powered personalized learning, and strengthening its entrepreneurship and sustainability studies. International exchange opportunities are planned to be expanded, facilities upgraded, and additional co-curricular activities offered to address changing student interests.

Conclusion

Millennium Global International School is a more than just a school—it is a launching pad for global citizens as intellectually gifted as they are morally rooted. With its combination of innovation, diversity, and academic achievement, the school readies students not only for university, but for life as reflective, effective leaders in a globalized world.



ST. FRANCIS COLLEGE



We empower the community to:

- Be passionate life-long learners
- Strive towards personal and academic excellence
- Be courageous and committed to impact the local and wider world positively

R. Joaquim Antunes, 678 - Pinheiros, **São Paulo - SP, Brazil** - postal code: 05415-001

  /stfranciscollgebrasil

www.stfrancis.com.br

WORTH THE JOURNEY

Education with Heart and Soul in Sussex's glorious countryside
35 minutes by train from central London

A Worth education is a journey in itself including first rate academic learning, the chance to befriend students from all over the world and a broad co-curricular programme.



Catholic co-educational
Day, boarding and flexible boarding
11-18 years
Qualifications include GCSE, A-levels and IB
www.worthischool.org.uk



The Number One Priority in School Leadership: Employee Care

One often overlooked principle in school leadership defines long-term success: faculty and staff care must be the top priority. When school employees thrive, students flourish, communities engage, and schools improve. The inverse is also true—neglect faculty and staff, and the entire system suffers.

The "Us vs. Them" Trap

A subtle divide often arises between faculty and administration, especially where formal teacher associations exist. While intended to give teachers a voice, these groups can unintentionally reinforce a harmful "us vs. them" mindset—implying that teachers and leaders have opposing agendas.

This dichotomy erodes trust. In *Trust in Schools: A Core Resource for Improvement*, Bryk and Schneider (2002) found that relational trust among educators and leaders is directly linked to improved student outcomes. When mistrust prevails, progress stalls.

Healthy Schools Share One Vision

High-functioning schools are built on shared purpose, mutual respect,

and collaboration. In these environments, the need for adversarial teacher representation diminishes—because leadership itself safeguards teacher well-being.

If a school's climate demands protective structures for teachers, the problem isn't the structure—it's a leadership failure. We must examine not just what systems exist but why and what they reveal about trust on campus.

Why School Employees Must Come First

The common phrase "students come first" applies well to curriculum and pedagogy. But that mindset falls short of creating a thriving learning and working environment. Students are central to a school's mission—but teachers make learning happen. Faculty and staff are the essence of the school. A school is only as effective as its employees. Leaders must, therefore, prioritize teachers' support, development, and well-being above all other stakeholder groups.

John Hattie's (2009) *Visible Learning* research confirms this: teacher efficacy and collective

expertise are among the most impactful factors on student achievement. Burned-out or unsupported teachers quickly lose the capacity to drive student success.

A Better Stakeholder Hierarchy

In a trusted leadership model, the traditional stakeholder pyramid is inverted. Effective school leaders understand the cascading benefits of prioritizing teacher care:

1. Faculty/Staff – Valued employees bring energy, creativity, and excellence into classrooms and offices.

Supportive working conditions—strong leadership, autonomy, and professional growth—improve employee retention and performance (Learning Policy Institute, 2016). Ingersoll & Strong (2011) found that quality induction and mentoring programs significantly boost new teachers' effectiveness. Gallup (2014) reported that teachers are more likely to innovate and engage students meaningfully when they feel heard and supported.

2. Students – Engaged teachers foster engaged learners.

About the Author

By Dr. Toby A. Travis, Author of TrustED: The Bridge to School Improvement



Klem and Connell (2004) showed that students who perceive teacher support show higher academic engagement and achievement.

Hattie (2009) highlights the importance of teacher-student relationships and classroom climate—both flourish when teachers thrive.

3. Parents – When students succeed, parent trust follows.

Parents often evaluate schools based on their child's experiences. Epstein's (2001) work on school-family partnerships shows that student success strengthens parent involvement.

Jeynes (2012) found that positive student outcomes build parental trust and engagement.

4. Administrators and Boards – Trust from the community

empowers leadership.

When school employees and students thrive, school leaders gain credibility and support. Leithwood et al. (2004), in a significant study for the Wallace Foundation, concluded that successful leadership depends heavily on trust—especially from parents and staff.

That trust becomes a catalyst for sustained school-wide improvement. This isn't idealistic thinking—it's strategic. When teachers are prioritized, a ripple effect touches every stakeholder.

Situational Awareness: The Bridge to Trust

Leadership rooted in employee care demands situational awareness. Great school leaders are like bridge supports—strong enough to hold the system together

but flexible enough to adapt to the needs of faculty, staff, students, and families.

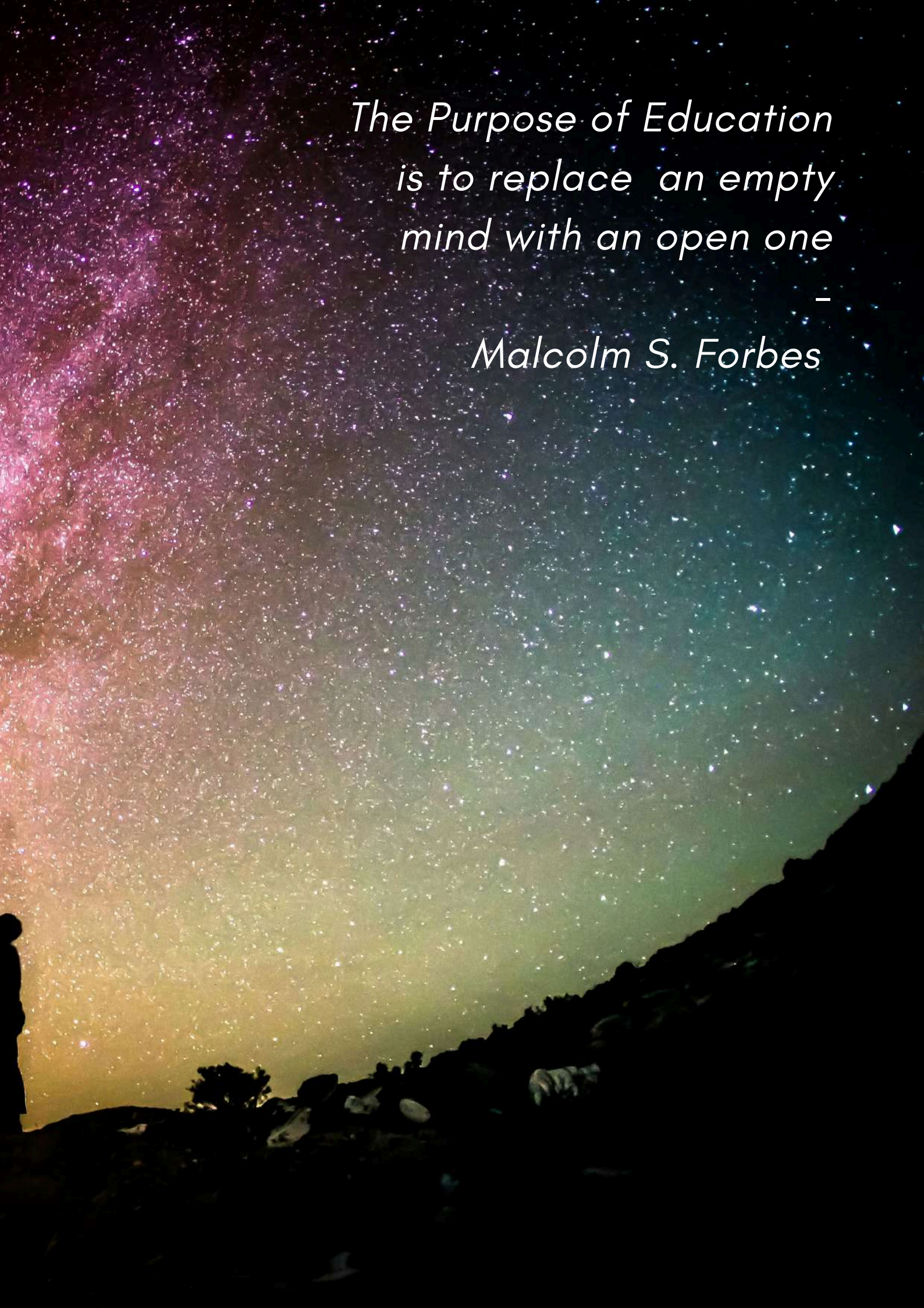
Situationally aware leaders anticipate challenges, listen well, remove barriers, and act before problems escalate. This is proactive leadership—grounded in trust, responsiveness, and shared purpose.

When Faculty/Staff Come First, Everyone Wins

When leaders prioritize school employees:

- **Faculty/Staff** are more likely to stay and feel fulfilled (Ingersoll, 2001).
- **Students** engage more and achieve more (Klem & Connell, 2004; Hattie, 2009).
- **Parents** become advocates (Epstein, 2001; Jeynes, 2012).
- **Leaders** gain the influence to lead real change (Leithwood et al., 2004).





*The Purpose of Education
is to replace an empty
mind with an open one*

—
Malcolm S. Forbes

Providing Excellence in British Education in all educational stages

Four locations in Spain

BRITISHINTERNATIONALSCHOOL.COM



Globeeducate
BRITISH
INTERNATIONAL
SCHOOLS
SPAIN



Cambridge House
BRITISH INTERNATIONAL SCHOOL
VALENCIA



St George's
BRITISH INTERNATIONAL SCHOOL
BILBAO



Coruña
BRITISH INTERNATIONAL SCHOOL
A CORUÑA



O Castro
BRITISH INTERNATIONAL SCHOOL
VIGO